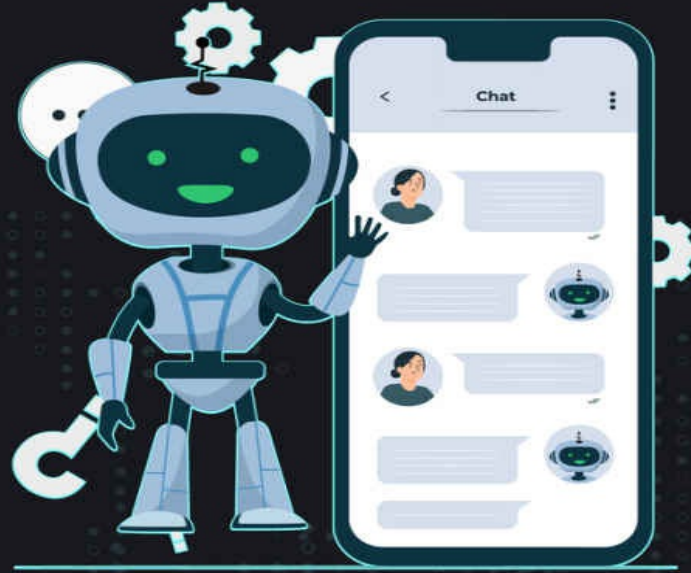




OpenAI



Learn

CHATGPT

The Future of Learning

Learn ChatGPT is a **must-read** for anyone interested in the role of **AI** in education. This groundbreaking book explores the potential of **ChatGPT**, a powerful **AI-powered platform**, to revolutionize the way we **learn and access information**.

A.A. KABIR

Learn ChatGPT

"Learn ChatGPT " is a must-read for anyone interested in the role of AI in education. This groundbreaking book explores the potential of ChatGPT, a powerful AI-powered platform, to revolutionize the way we learn and access information.

From personalized tutoring and expert advice to real-time feedback and support, ChatGPT offers a range of tools and resources to help students and professionals alike achieve their goals.

Whether you're a student, a teacher, or an education policymaker, "Learn ChatGPT " offers valuable insights and practical advice on how to harness the power of AI to enhance and enrich the learning experience. Don't miss out on this groundbreaking exploration of the future of education.

Copyright

All rights reserved. No part of this publication may be reproduced, distributed, or transmitted in any form or by any means, including photocopying, recording or other electronic or mechanical methods, without the prior written permission of the publisher, except in the case of brief quotations embodied in critical reviews and certain other noncommercial uses permitted by copyright law.

Copyright © 2022 by A.A. KABIR

Review Request

Dear readers,

If you learn anything useful from this book, we would greatly appreciate it if you could take a moment to write a review. Your review would help other readers access the book and also benefit from it.

To write a review, simply navigate to the book's page and look for the "write a review" button. If you have any difficulties, please do not hesitate to contact us for assistance.

Thank you for your time and for helping this book reach other readers. We look forward to reading your reviews.

Best regards,

A.A. KABIR

(realaakabir@yahoo.com)

Introduction

Welcome to the world of ChatGPT, a powerful language model trained by OpenAI to assist with a variety of tasks. This book will serve as an introduction to ChatGPT, including its capabilities and uses. You will learn how to interact with ChatGPT and how to leverage its unique capabilities to improve your workflows and accomplish a wide range of tasks. Whether you are a student, a professional, a youtuber or simply someone looking to improve your language skills, ChatGPT is an invaluable tool that can help you achieve your goals.

Section 1

Introduction to ChatGPT

This section provides a comprehensive overview of ChatGPT, including an introduction to what it is and how it works, a discussion of its history and development, and an explanation of the basics of interacting with it.

Chapter 1: What is ChatGPT and how does it work? provides an introduction to ChatGPT and explains how it works.

Chapter 2: The history of ChatGPT and its development discusses the history of ChatGPT and its development.

Chapter 3: The basics of interacting with ChatGPT covers the basics of interacting with ChatGPT.

Chapter 1

What is ChatGPT and how does it work?

Introduction to ChatGPT and its capabilities

ChatGPT is a large language model that was developed by the team at OpenAI. It is based on the GPT-3 model, and is designed to generate human-like responses to input in a wide range of formats.

One of the key capabilities of ChatGPT is its ability to understand and respond to input in a conversational context. Using advanced natural language processing algorithms and machine learning techniques, ChatGPT is able to understand the meaning and intent behind input, and generate responses that are appropriate and natural-sounding.

Another important capability of ChatGPT is its ability to handle a wide range of input formats. In addition to being able to understand and respond to text input, ChatGPT is also able to understand and respond to input in the form of speech, making it a versatile tool for use in a variety of applications.

Overall, ChatGPT is a highly advanced and capable language model that is well-suited for generating human-like responses in a conversational context. Its ability to understand and respond to input, and its ability to handle a wide range of input formats, make it a valuable tool for applications that require natural language processing.

How ChatGPT uses natural language processing and machine learning

ChatGPT uses natural language processing and machine learning to understand and respond to input in a conversational context. At its core, ChatGPT is a large language model that was trained on a massive dataset of text. This training allows the model to understand the structure and meaning of language, and to generate responses that are appropriate and natural-sounding.

When ChatGPT receives input, it uses natural language processing algorithms to analyze the text and extract the meaning and intent behind it. This allows the model to understand the context of the input, and to generate a response that is relevant and appropriate.

In addition to natural language processing, ChatGPT also uses machine learning algorithms to improve its performance over time. As the model

receives more input and generates more responses, it is able to learn from its mistakes and improve its ability to understand and respond to input in a natural and human-like way.

ChatGPT is a powerful combination of natural language processing and machine learning that allows it to understand and respond to input in a conversational context. These techniques enable ChatGPT to generate responses that are appropriate and natural-sounding, making it a valuable tool for applications that require natural language processing.

How ChatGPT is different from other language models and AI assistants

ChatGPT is different from other language models and AI assistants in several key ways. One of the most significant differences is the size of the model. ChatGPT is a large language model that was trained on a massive dataset of text, which gives it an unparalleled ability to generate human-like responses to input. In comparison, other language models and AI assistants are often trained on smaller datasets and are not able to generate responses with the same level of fluency and naturalness.

Another important difference between ChatGPT and other language models and AI assistants is the type of input that it can handle. ChatGPT is designed to understand and respond to a wide range of conversational inputs, including both text and speech. In contrast, other language models and AI assistants are often more limited in their ability to process input, and may only be able to handle a single format (e.g. text only).

ChatGPT is well-suited for generating human-like responses in a conversational context. Its large size and versatile input capabilities set it apart from other language models and AI assistants, and make it a valuable tool for applications that require natural language processing.

Chapter 2

The history of ChatGPT and its development

The origins of ChatGPT and its development over time

The origins of ChatGPT can be traced back to the development of GPT-3, a large language model created by the team at OpenAI. GPT-3, or "Generative Pretrained Transformer 3," was trained on a massive dataset of text and was designed to generate human-like responses to input in a wide range of formats.

The team at OpenAI recognized the potential for GPT-3 to be used in a conversational context, and began working on adapting the model for use in chatbots and other applications. This work eventually led to the creation of ChatGPT, a specialized version of GPT-3 that is optimized for generating conversational responses.

The development of ChatGPT involved a team of researchers and engineers at OpenAI, who worked together to fine-tune the model and develop new techniques for improving its performance. Some of the key innovations that were introduced during the development of ChatGPT include advances in natural language processing and machine learning algorithms that allow the model to better understand and respond to input in a conversational context.

Today, ChatGPT is widely regarded as one of the most advanced and capable conversational AI systems available, and continues to be developed and improved by the team at OpenAI.

The teams and researchers behind ChatGPT's creation

The development of ChatGPT involved a team of researchers and engineers at OpenAI, who worked together to create and refine the model. The team included experts in a variety of fields, including natural language processing, machine learning, and AI.

Some of the key individuals involved in the development of ChatGPT include OpenAI researchers Ilya Sutskever, Ian Goodfellow, and Alex Graves, who were among the pioneers of the GPT-3 model. Other notable contributors to the development of ChatGPT include researchers such as Jean-Baptiste Cordonnier, who worked on the natural language processing

algorithms that allow ChatGPT to understand and respond to input in a conversational context.

The development of ChatGPT was a collaborative effort that involved a diverse team of researchers and engineers who worked together to create and refine the model. Their efforts have led to the creation of one of the most advanced and capable conversational AI systems available today.

The impact of ChatGPT on the field of artificial intelligence and natural language processing

Since its release, ChatGPT has had a significant impact on the field of artificial intelligence and natural language processing. As a highly advanced language model, ChatGPT has pushed the boundaries of what is possible with current technology, and has demonstrated the potential for AI systems to understand and generate human-like responses in a wide range of conversational contexts.

One of the key impacts of ChatGPT has been the advancement of natural language processing techniques. The development of ChatGPT involved the creation and refinement of new algorithms and models that allow the system to better understand and respond to input in a conversational context. These innovations have helped to improve the performance of other natural language processing systems, and have opened up new possibilities for the use of AI in applications that involve language processing.

Another impact of ChatGPT has been the increased focus on the development of conversational AI. The success of ChatGPT has helped to highlight the potential for AI systems to engage in natural, human-like conversations, and has spurred the development of new tools and techniques for building better chatbots and other conversational AI systems.

ChatGPT has made a significant contribution to the field of artificial intelligence and natural language processing, and its development continues to drive innovation and progress in these areas.

Chapter 3

The basics of interacting with ChatGPT

Setting up and accessing ChatGPT

To set up and access ChatGPT, you will need to have an account with OpenAI. Go to the OpenAI URL <https://chat.openai.com> on your browser and click the “sign up” button. Provide your email and then create a password. Once you are done, you can go ahead and verify your email. And your account has been created.

Once you have an account, you can use this link to reach the chat box <https://chat.openai.com/chat> and you are good to go or you can access ChatGPT through the OpenAI API.

To set up your OpenAI account, you will need to create an API key and install the OpenAI Python library. Once you have done this, you will be able to access ChatGPT and use it to generate responses to input.

To access ChatGPT, you will need to use the OpenAI API to send your input to the model and receive the generated response. You can do this by making an HTTP POST request to the OpenAI API, and providing your input in the request body. The API will then return the generated response in the HTTP response.

Once you have set up your OpenAI account and installed the OpenAI Python library, you can access ChatGPT by following these steps:

1. Import the openai module:

```
import openai
```

Copy code

2. Set your OpenAI API key:

```
openai.api_key = "<your_api_key>"
```

Copy code

3. Use the openai.Completion.create() method to generate a response from ChatGPT:

```
response = openai.Completion.create(  
    engine="text-davinci-002",  
    prompt="<your_input>",  
    max_tokens=1024,  
    temperature=0.5,  
)
```

Copy code

The response variable will contain the generated response from ChatGPT, which you can then use as needed in your application.

1. Import the openai module:

Copy code paste code in your terminal
import openai

2. Set your OpenAI API key:

Copy code paste code in your terminal
openai.api_key = "<your_api_key>"

3. Use the openai.Completion.create() method to generate a response from ChatGPT:

Copy code paste code in your terminal
*response = openai.Completion.create(
engine="text-davinci-002",
prompt="<your_input>",
max_tokens=1024,
temperature=0.5,
)*

The response variable will contain the generated response from ChatGPT, which you can then use as needed in your application.

Setting up and accessing ChatGPT is relatively straightforward, and can be done using the OpenAI API and the OpenAI Python library. Once you have set up your account and installed the necessary libraries, you can use ChatGPT to generate responses to input in a wide range of conversational contexts.

The fundamentals of communicating with ChatGPT

Communicating with ChatGPT involves sending input to the model and receiving generated responses. The input that you provide to ChatGPT can be in the form of text or speech, and the model will generate responses that are appropriate and natural-sounding.

To communicate with ChatGPT, you will need to use the OpenAI API to send your input to the model and receive the generated response. You can do this by making an HTTP POST request to the OpenAI API, and providing your input in the request body. The API will then return the generated response in the HTTP response.

When sending input to ChatGPT, it is important to provide context for the input so that the model can generate a relevant and appropriate response. This can be done by providing a prompt or question that sets the stage for the conversation, or by providing background information about the topic that you want to discuss.

Once you have sent your input to ChatGPT, the model will generate a response and return it to you via the OpenAI API. The response will be in the form of text, and will be generated using natural language processing algorithms that allow the model to understand the meaning and intent behind the input.

Communicating with ChatGPT involves sending input to the model and receiving generated responses via the OpenAI API. By providing context and background information for the input, you can help ChatGPT generate more relevant and appropriate responses.

Common commands and actions you can use with ChatGPT

There are many common commands and actions that you can use with ChatGPT. Some examples of these include:

Asking ChatGPT to provide information or answer a question: You can ask ChatGPT to provide information or answer a question by providing a

prompt or question in your input. For example, you could ask ChatGPT "What is the capital of France?" or "Can you tell me more about the history of the Eiffel Tower?"

Requesting ChatGPT to generate text: You can use ChatGPT to generate text by providing a prompt or topic for the model to write about. For example, you could ask ChatGPT to "Write a short story about a magical world" or "Describe a typical day in the life of a time traveler."

Engaging in conversation with ChatGPT: You can use ChatGPT to engage in a conversation by providing input and allowing the model to generate responses. For example, you could ask ChatGPT "What do you think about the current state of AI?" and then continue the conversation by responding to the generated response.

There are many common commands and actions that you can use with ChatGPT, including asking for information, requesting text generation, and engaging in conversation. These actions allow you to take full advantage of the capabilities of ChatGPT and use the model to understand and respond to input in a natural and human-like way.

Section 2

Advanced techniques for using ChatGPT

The section covers advanced topics related to using ChatGPT, including customization, tips and tricks, and advanced features like language translation and question answering. These chapters provide valuable information for experienced users looking to get the most out of the tool.

Chapter 4 How to customize ChatGPT for your specific needs: explains how to customize ChatGPT for specific needs.

Chapter 5 Tips and tricks for getting the most out of ChatGPT: provides tips and tricks for getting the most out of ChatGPT.

Chapter 6: Advanced features of ChatGPT, including language translation and question answering: discusses advanced features of ChatGPT, such as language translation and question answering.

Chapter 4

How to customize ChatGPT for your specific needs

Personalizing ChatGPT for your unique goals and tasks

One of the key benefits of ChatGPT is its ability to be personalized for your unique goals and tasks. By providing the model with relevant information and training data, you can tailor ChatGPT to better understand and respond to your specific needs.

One way to personalize ChatGPT is by providing the model with additional training data that is relevant to your goals and tasks. For example, if you are using ChatGPT for a customer service application, you could provide the model with a dataset of common customer service questions and answers to help it better understand and respond to customer inquiries.

Another way to personalize ChatGPT is by providing the model with context and background information that is relevant to your goals and tasks. This can help the model to generate more relevant and appropriate responses, and can improve its performance in specific applications.

Personalizing ChatGPT for your unique goals and tasks can help the model to better understand and respond to your specific needs. By providing the model with relevant training data and context information, you can tailor ChatGPT to better serve your specific goals and tasks.

Using ChatGPT with other tools and applications

ChatGPT can be used with other tools and applications to provide a wide range of capabilities and functionality. Because ChatGPT is accessed via the OpenAI API, it can be integrated with a variety of other systems and tools, allowing you to use its natural language processing and generation capabilities in a wide range of contexts.

One common way to use ChatGPT with other tools and applications is to integrate it with a chatbot or conversational AI system. By using ChatGPT to generate responses to user input, you can create a chatbot that is able to engage in natural and human-like conversations with users. This can be useful for applications such as customer service, where users expect to be able to have conversations with the chatbot in a natural and human-like way.

Another way to use ChatGPT with other tools and applications is to integrate it with information extraction and summarization systems. By using

ChatGPT to generate summaries of large volumes of text, you can create systems that are able to automatically extract and summarize key information from documents and other sources. This can be useful for applications such as news aggregation, document summarization, and data analysis.

Overall, ChatGPT can be used with a wide range of other tools and applications, allowing you to take advantage of its natural language processing and generation capabilities in a variety of contexts. By integrating ChatGPT with other systems and tools, you can create powerful and versatile applications that are able to understand and generate human-like responses in a wide range of conversational contexts.

Chapter 5

Tips and tricks for getting the most out of ChatGPT **Common pitfalls to avoid when using ChatGPT**

There are several common pitfalls to avoid when using ChatGPT. Some of the most important ones include:

1. Providing insufficient context or background information: ChatGPT is a large language model that is trained to understand and respond to input in a wide range of contexts. However, it is not able to generate relevant and appropriate responses unless it is provided with sufficient context and background information. Therefore, it is important to provide ChatGPT with enough information to understand the meaning and intent behind your input.

2. Overloading the model with too much input: ChatGPT is a large and complex model, and it can only process a certain amount of input at a time. If you overload the model with too much input, it may not be able to generate a response, or the response may be incomplete or incorrect. To avoid this, it is important to limit the amount of input that you provide to ChatGPT, and to break up long or complex inputs into smaller, more manageable chunks.

3. Using the model in inappropriate contexts or for inappropriate tasks: ChatGPT is a powerful tool, but it is not a magic bullet that can solve all problems. Like any other AI system, ChatGPT has its limitations, and it is not always appropriate to use the model in certain contexts or for certain tasks. For example, ChatGPT may not be well-suited for generating responses to input that is highly technical or specialized, or for tasks that require a high level of creativity or originality. To avoid using the model inappropriately, it is important to understand its capabilities and limitations, and to use it only in contexts where it is likely to be effective.

In all, there are several common pitfalls to avoid when using ChatGPT. By being aware of these pitfalls and taking steps to avoid them, you can ensure that you are using the model effectively and efficiently, and getting the most out of its natural language processing and generation capabilities.

Strategies for getting the best results from ChatGPT

There are several strategies that you can use to get the best results from ChatGPT. Some of the most effective strategies include:

Providing context and background information: As mentioned above, ChatGPT is a large language model that is trained to understand and respond to input in a wide range of contexts. To get the best results from the model, it is important to provide it with enough context and background information to understand the meaning and intent behind your input. This can include providing a prompt or question to set the stage for the conversation, or providing background information about the topic that you want to discuss.

Limiting the amount of input that you provide: ChatGPT is a large and complex model, and it can only process a certain amount of input at a time. To get the best results from the model, it is important to limit the amount of input that you provide, and to break up long or complex inputs into smaller, more manageable chunks. This will help the model to generate more accurate and relevant responses, and will improve its overall performance.

Using the appropriate temperature setting: ChatGPT includes a temperature setting that allows you to control the level of creativity and originality in the model's responses. A high temperature setting will result in responses that are more creative and varied, while a low temperature setting will result in responses that are more predictable and consistent. To get the best results from the model, it is important to choose the appropriate temperature setting for your specific goals and tasks.

Fine-tuning the model for your specific goals and tasks: As mentioned above, ChatGPT can be personalized for your specific goals and tasks by providing the model with additional training data and context information. By fine-tuning the model to better understand your specific needs, you can improve its performance and get better results from ChatGPT.

Advanced techniques for optimizing your use of ChatGPT

There are several advanced techniques that you can use to optimize your use of ChatGPT. Some of the most effective techniques include:

Fine-tuning the model for your specific goals and tasks: As mentioned above, ChatGPT can be personalized for your specific goals and tasks by providing the model with additional training data and context information. By fine-tuning the model to better understand your specific needs, you can improve its performance and get better results from ChatGPT.

Using the appropriate temperature setting: ChatGPT includes a

temperature setting that allows you to control the level of creativity and originality in the model's responses. A high temperature setting will result in responses that are more creative and varied, while a low temperature setting will result in responses that are more predictable and consistent. To get the best results from the model, it is important to choose the appropriate temperature setting for your specific goals and tasks.

Using prompts and questions to provide context and structure for the conversation: When using ChatGPT to engage in conversation, it is important to provide the model with enough context and structure to generate relevant and appropriate responses. One effective way to do this is by using prompts and questions to set the stage for the conversation and guide the flow of the conversation. For example, you could ask ChatGPT "What do you think about the current state of AI?" and then continue the conversation by responding to the generated response.

Testing and evaluating the model's performance: To optimize your use of ChatGPT, it is important to regularly test and evaluate the model's performance. This can help you to identify any areas where the model is not performing well, and to take steps to improve its performance. For example, you could test the model's responses to a variety of inputs, and compare them to human-generated responses to evaluate the model's performance.

Overall, there are several advanced techniques that you can use to optimize your use of ChatGPT. By fine-tuning the model, using the appropriate temperature setting, providing prompts and questions, and regularly testing and evaluating the model's performance, you can get the best results from ChatGPT and ensure that it is meeting your specific goals and tasks.

Chapter 6

Advanced features of ChatGPT, including language translation and question answering

How ChatGPT can help you with language translation

ChatGPT is not specifically designed for language translation, but it can still be useful for this purpose. Because ChatGPT is a large language model that is trained on a wide range of text data, it can understand and generate responses in multiple languages.

To use ChatGPT for language translation, you can provide the model with input in one language, and it will generate a response in the same language. You can then use the response as a translation of the input. For example, if you provide ChatGPT with input in French, it will generate a response in French that you can use as a translation of the input.

One advantage of using ChatGPT for language translation is that it can provide a more natural and human-like translation than a traditional machine translation system. Because ChatGPT is trained on a large amount of text data, it can generate responses that are more fluent and natural-sounding than those produced by other machine translation systems.

Overall, ChatGPT can be useful for language translation, although it is not specifically designed for this purpose. By providing the model with input in one language, you can use ChatGPT to generate a response in the same language that can be used as a translation of the input. This can provide a more natural and human-like translation than traditional machine translation systems.

Using ChatGPT to answer complex questions and provide information

One of the key capabilities of ChatGPT is its ability to answer complex questions and provide information. Because ChatGPT is a large language model that is trained on a wide range of text data, it can understand and respond to a variety of questions and requests for information.

To use ChatGPT to answer complex questions and provide information, you can provide the model with a prompt or question that sets the stage for the conversation. For example, you could ask ChatGPT "What is the capital

of France?" or "Can you tell me more about the history of the Eiffel Tower?" The model will then generate a response that provides the requested information in a natural and human-like way.

One advantage of using ChatGPT to answer complex questions and provide information is that it can provide a more natural and human-like response than a traditional information retrieval system. Because ChatGPT is trained on a large amount of text data, it can generate responses that are more fluent and natural-sounding than those produced by other information retrieval systems.

Overall, ChatGPT is well-suited for answering complex questions and providing information. By providing the model with a prompt or question, you can use ChatGPT to generate a response that provides the requested information in a natural and human-like way. This can be useful for applications such as customer service, where users expect to be able to have conversations with the chatbot in a natural and human-like way.

Advanced applications of ChatGPT's natural language processing capabilities

There are many advanced applications of ChatGPT's natural language processing capabilities. Some of the most interesting and innovative applications include:

Generating text: One of the key capabilities of ChatGPT is its ability to generate text in a wide range of styles and formats. By providing the model with a prompt or topic, you can use ChatGPT to generate text that is appropriate and natural-sounding. This can be useful for applications such as content generation, where you need to generate large volumes of text quickly and accurately.

Engaging in conversation: Another key capability of ChatGPT is its ability to engage in conversation in a natural and human-like way. By providing the model with input and allowing it to generate responses, you can create a chatbot or conversational AI system that is able to engage in natural and human-like conversations with users. This can be useful for applications such as customer service, where users expect to be able to have conversations with the chatbot in a natural and human-like way.

Extracting and summarizing information: ChatGPT's natural language processing capabilities can also be useful for extracting and summarizing information from large volumes of text. By providing the model with a large dataset of text, you can use ChatGPT to automatically extract and summarize

key information from the text. This can be useful for applications such as news aggregation, document summarization, and data analysis.

There are many advanced applications of ChatGPT's natural language processing capabilities. By leveraging the model's ability to generate text, engage in conversation, and extract and summarize information, you can create powerful and innovative applications that are able to understand and generate human-like responses in a wide range of conversational contexts.

Section 3

Applications of ChatGPT

This section covers practical applications of ChatGPT in various settings, including research, the workplace, and personal use. These chapters provide valuable information for readers looking to incorporate ChatGPT into their daily lives.

Chapter 7: Using ChatGPT for research and language learning discusses using ChatGPT for research and language learning.

Chapter 8: ChatGPT in the workplace: streamlining processes and improving productivity: Covers using ChatGPT in the workplace to streamline processes and improve productivity.

Chapter 9: ChatGPT for personal use: managing your schedule and improving your communication skills: Focuses on using ChatGPT for personal use, including managing schedules and improving communication skills.

Chapter 7

Using ChatGPT for research and language learning **How ChatGPT can assist with research projects and academic work**

ChatGPT can be useful for assisting with research projects and academic work. Because ChatGPT is a large language model that is trained on a wide range of text data, it can understand and respond to a variety of questions and requests for information. This can be useful for research projects that require access to large amounts of information or data.

To use ChatGPT for research projects and academic work, you can provide the model with a prompt or question that sets the stage for the conversation. For example, you could ask ChatGPT "What is the capital of France?" or "Can you tell me more about the history of the Eiffel Tower?" The model will then generate a response that provides the requested information in a natural and human-like way.

One advantage of using ChatGPT for research projects and academic work is that it can provide a more natural and human-like response than a traditional information retrieval system. Because ChatGPT is trained on a large amount of text data, it can generate responses that are more fluent and natural-sounding than those produced by other information retrieval systems.

Overall, ChatGPT can be useful for assisting with research projects and academic work. By providing the model with a prompt or question, you can use ChatGPT to generate a response that provides the requested information in a natural and human-like way. This can help you to quickly and easily access large amounts of information and data for your research projects and academic work.

Best practices for using ChatGPT as a language learning tool

There are several best practices that you can follow when using ChatGPT as a language learning tool. Some of the most important ones include:

Providing the model with a wide range of input: ChatGPT is trained on a large amount of text data, and it can generate responses in multiple languages. To use the model as a language learning tool, it is important to provide it with a wide range of input in the language that you are learning.

This will help the model to better understand the nuances and complexities of the language, and to generate more accurate and natural-sounding responses.

Using the appropriate temperature setting: ChatGPT includes a temperature setting that allows you to control the level of creativity and originality in the model's responses. A high temperature setting will result in responses that are more creative and varied, while a low temperature setting will result in responses that are more predictable and consistent. To use ChatGPT as a language learning tool, it is important to choose the appropriate temperature setting for your specific goals and tasks. For example, a high temperature setting may be more appropriate for practicing conversation and fluency, while a low temperature setting may be more appropriate for practicing grammar and vocabulary.

Providing context and background information: As mentioned above, ChatGPT is a large language model that is trained to understand and respond to input in a wide range of contexts. To get the best results from the model as a language learning tool, it is important to provide it with enough context and background information to understand the meaning and intent behind your input. This can include providing a prompt or question to set the stage for the conversation, or providing background information about the topic that you want to discuss.

Regularly testing and evaluating your progress: To use ChatGPT effectively as a language learning tool, it is important to regularly test and evaluate your progress.

This can help you to identify any areas where you are struggling, and to take steps to improve your skills and proficiency in the language.

There are several ways that you can test and evaluate your progress when using ChatGPT as a language learning tool. Some of the most effective methods include:

Using the model to generate responses to a variety of inputs: By providing the model with a wide range of inputs in the language that you are learning, you can test and evaluate your ability to understand and generate responses in the language. For example, you could provide the model with a prompt or question, and then evaluate the generated response to see if it is accurate and appropriate.

Comparing the model's responses to human-generated responses: Another way to test and evaluate your progress when using ChatGPT as a language learning tool is to compare the model's responses to human-generated

responses. This can help you to see how well the model is able to generate responses that are natural and human-like, and to identify areas where the model's responses are not as fluent or accurate as those produced by humans.

Tracking your progress over time: To get the most out of ChatGPT as a language learning tool, it is important to track your progress over time. This can help you to see how your skills and proficiency in the language are improving, and to identify areas where you need to focus your efforts in order to continue making progress.

Overall, regularly testing and evaluating your progress when using ChatGPT as a language learning tool is an important part of the learning process. By using the model to generate responses, comparing the model's responses to human-generated responses, and tracking your progress over time, you can ensure that you are making progress and achieving your language learning goals.

Chapter 8

ChatGPT in the workplace: streamlining processes and improving productivity

How businesses and organizations can use ChatGPT to improve their workflow

There are several ways that businesses and organizations can use ChatGPT to improve their workflow. Some of the most effective uses of the model include:

Providing customer service: ChatGPT's ability to engage in natural and human-like conversation can be useful for providing customer service. By providing the model with input from customers, you can use ChatGPT to generate responses that are accurate and appropriate. This can help you to handle a large volume of customer inquiries quickly and efficiently, and to provide high-quality customer service.

Generating content: ChatGPT's ability to generate text in a wide range of styles and formats can be useful for generating content. By providing the model with a prompt or topic, you can use ChatGPT to generate text that is appropriate and natural-sounding. This can be useful for applications such as content marketing, where you need to generate large volumes of content quickly and accurately.

Extracting and summarizing information: ChatGPT's natural language processing capabilities can also be useful for extracting and summarizing information from large volumes of text. By providing the model with a large dataset of text, you can use ChatGPT to automatically extract and summarize key information from the text. This can be useful for applications such as news aggregation, document summarization, and data analysis.

Overall, ChatGPT can be useful for businesses and organizations in a variety of ways. By leveraging the model's ability to engage in conversation, generate text, and extract and summarize information, you can use ChatGPT to improve your workflow and achieve your business goals.

Examples of ChatGPT in action in different industries

There are many examples of ChatGPT in action in different industries. Some of the most interesting and innovative uses of the model include:

1. **Healthcare:** ChatGPT's ability to understand and respond to complex questions and requests for information can be useful for healthcare applications. For example, ChatGPT could be used to provide patients with information about their health conditions, treatments, and medications, or to answer questions from healthcare providers about complex medical topics.

2. **Education:** ChatGPT's ability to engage in natural and human-like conversation can be useful for education applications. For example, ChatGPT could be used to provide students with personalized tutoring and instruction, or to engage in conversation with students to help them practice their language skills.

3. **Retail:** ChatGPT's ability to generate text in a wide range of styles and formats can be useful for retail applications. For example, ChatGPT could be used to generate product descriptions, customer reviews, and other types of content that are needed to support the sales and marketing efforts of a retail business.

In all, there are many examples of ChatGPT in action in different industries. The model's ability to understand and respond to complex questions, engage in conversation, and generate text makes it well-suited for a wide range of applications in healthcare, education, retail, and many other industries.

Best practices for integrating ChatGPT into your workplace

There are several best practices that you can follow when integrating ChatGPT into your workplace. Some of the most important ones include:

Identifying specific goals and tasks: Before you begin using ChatGPT in your workplace, it is important to identify specific goals and tasks that you want to accomplish with the model. This will help you to determine the most appropriate way to use the model, and to ensure that you are getting the most out of the technology.

Providing the model with enough context and background information: As mentioned above, ChatGPT is a large language model that is trained to understand and respond to input in a wide range of contexts. To get the best results from the model, it is important to provide it with enough context and background information to understand the meaning and intent behind your input. This can include providing a prompt or question to set the stage for the conversation, or providing background information about the topic that you want to discuss.

Using the appropriate temperature setting: ChatGPT includes a

temperature setting that allows you to control the level of creativity and originality in the model's responses. A high temperature setting will result in responses that are more creative and varied, while a low temperature setting will result in responses that are more predictable and consistent. To get the best results from the model, it is important to choose the appropriate temperature setting for your specific goals and tasks.

Regularly testing and evaluating your progress: To use ChatGPT effectively in your workplace, it is important to regularly test and evaluate your progress. This can help you to identify any areas where you are struggling, and to take steps to improve your use of the technology.

By following these best practices, you can ensure that you are getting the most out of ChatGPT in your workplace. By identifying specific goals and tasks, providing the model with enough context and background information, using the appropriate temperature setting, and regularly testing and evaluating your progress, you can ensure that you are using the technology effectively and achieving your desired results.

Chapter 9

ChatGPT for personal use: managing your schedule and improving your communication skills

How ChatGPT can help you manage your daily schedule and tasks

One of the key ways that ChatGPT can help you manage your daily schedule and tasks is by providing you with reminders and alerts. By providing the model with your schedule and a list of tasks, you can use ChatGPT to generate reminders and alerts that help you stay on track and stay organized.

For example, you could ask ChatGPT to remind you about an important meeting that you have scheduled for tomorrow, or to alert you when it is time to start working on a specific task. The model will then generate a reminder or alert that is appropriate and natural-sounding, and that will help you to stay on track and stay organized throughout the day.

Another way that ChatGPT can help you manage your daily schedule and tasks is by providing you with information and assistance when you need it. For example, you could ask ChatGPT to provide you with information about a specific task or project, or to help you plan your day or week. The model will then generate a response that provides you with the information or assistance that you need, in a natural and human-like way.

ChatGPT can be a useful tool for helping you manage your daily schedule and tasks. By providing you with reminders and alerts, and by providing you with information and assistance when you need it, ChatGPT can help you to stay on track and stay organized throughout the day.

Using ChatGPT to improve your communication skills

One of the key ways that ChatGPT can help you improve your communication skills is by providing you with personalized feedback and guidance. By providing the model with input and allowing it to generate responses, you can use ChatGPT to practice your communication skills and to receive feedback and guidance on your performance.

For example, you could use ChatGPT to practice your conversation skills

by engaging the model in a conversation. As you speak, the model will generate responses that are appropriate and natural-sounding, and you can use these responses to evaluate your own performance and to identify areas for improvement. For example, you might notice that you are using complex or unclear language, or that you are not effectively communicating your thoughts and ideas. By receiving feedback and guidance from ChatGPT, you can identify these areas for improvement and take steps to improve your communication skills.

Another way that ChatGPT can help you improve your communication skills is by providing you with information and guidance on specific communication topics. For example, you could ask ChatGPT to provide you with information on how to effectively communicate with a specific audience, or to provide you with tips and strategies for improving your public speaking skills. The model will then generate a response that provides you with the information and guidance that you need, in a natural and human-like way.

Overall, ChatGPT can be a useful tool for helping you improve your communication skills. By providing you with personalized feedback and guidance, and by providing you with information and guidance on specific communication topics, ChatGPT can help you to identify areas for improvement and to take steps to improve your communication skills.

Best practices for using ChatGPT in your personal life

There are several best practices that you can follow when using ChatGPT in your personal life. Some of the most important ones include:

Identifying specific goals and tasks: Before you begin using ChatGPT in your personal life, it is important to identify specific goals and tasks that you want to accomplish with the model. This will help you to determine the most appropriate way to use the model, and to ensure that you are getting the most out of the technology.

Providing the model with enough context and background information: As mentioned above, ChatGPT is a large language model that is trained to understand and respond to input in a wide range of contexts. To get the best results from the model, it is important to provide it with enough context and background information to understand the meaning and intent behind your input. This can include providing a prompt or question to set the stage for the

conversation, or providing background information about the topic that you want to discuss.

Using the appropriate temperature setting: ChatGPT includes a temperature setting that allows you to control the level of creativity and originality in the model's responses. A high temperature setting will result in responses that are more creative and varied, while a low temperature setting will result in responses that are more predictable and consistent. To get the best results from the model, it is important to choose the appropriate temperature setting for your specific goals and tasks.

Regularly testing and evaluating your progress: To use ChatGPT effectively in your personal life, it is important to regularly test and evaluate your progress. This can help you to identify any areas where you are struggling, and to take steps to improve your use of the technology.

By following these best practices, you can ensure that you are getting the most out of ChatGPT in your personal life. By identifying specific goals and tasks, providing the model with enough context and background information, using the appropriate temperature setting.

Review Request

Dear readers,

If you have learnt anything useful from this book, we would greatly appreciate it if you could take a moment to write a review. Your review would help other readers access the book and also benefit from it.

To write a review, simply navigate to the book's page and look for the "write a review" button. If you have any difficulties, please do not hesitate to contact us for assistance.

Thank you for your time and for helping this book reach other readers. We look forward to reading your reviews.

Best regards,

A.A. KABIR

(realaakabir@yahoo.com)